

# SOUTHFIELD SHOPPING CENTER



**RETAIL  
FOR LEASE**  
5725 YOUREE DRIVE  
SHREVEPORT, LA 71105

- › 40,000+ CARS DAILY AT YOUREE & SOUTHFIELD
- › HIGH VISIBLE SIGNAGE & STREET FRONT VISIBILITY
- › EASY ACCESS PARKING
- › ADJACENT TO RITE AID

## DEMOGRAPHICS

POPULATION	1 MILE	5 MILE	10 MILE
2013 EST.	9,289	158,200	286,974
2018 PROJECTION	9,439	162,280	294,178
HH INCOME			
2013 AVG.	\$77,239	\$53,099	\$57,138
2018 PROJECTION	\$89,551	\$60,854	\$66,545

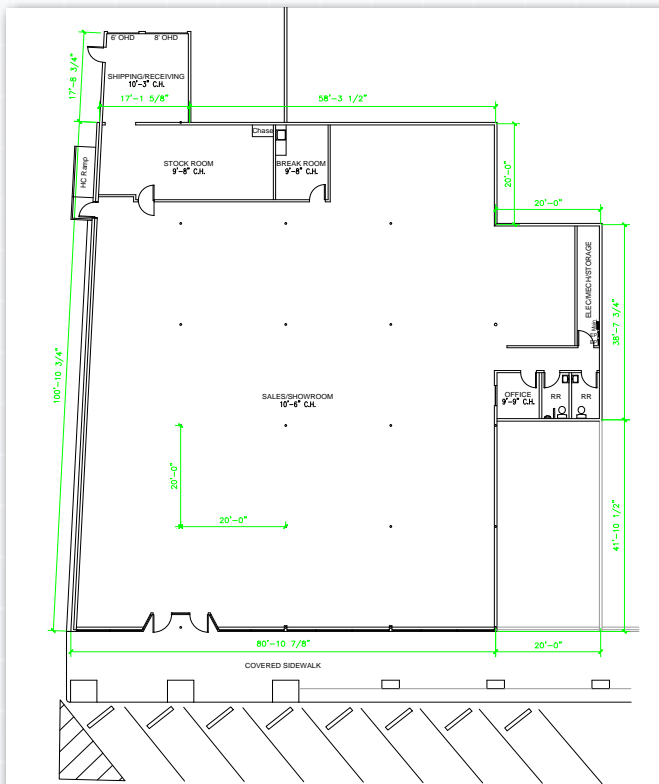
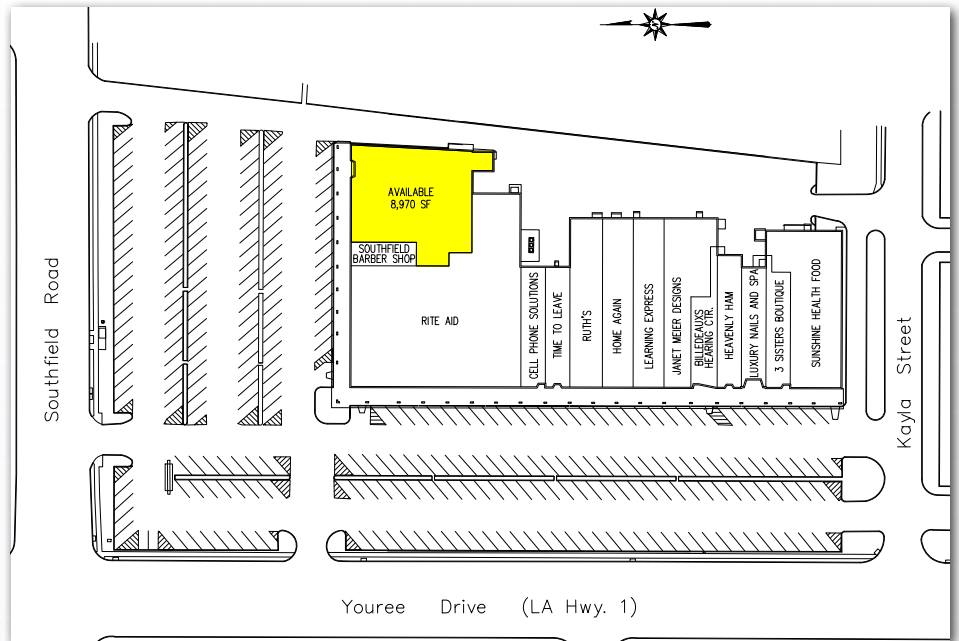


SEALY REAL ESTATE SERVICES, LLC  
333 TEXAS ST., STE. 1050  
SHREVEPORT, LA 71101  
318.222.8700  
WWW.SEALYNET.COM

FOR INFORMATION CONTACT:  
BETH KING, SIOR  
318.698.1103 (D)  
318.453.6066 (M)  
BETHK@SEALYNET.COM

## PROPERTY OVERVIEW

Southfield Shopping Center is one of the very best retail opportunities in Shreveport. Strategically located at Southfield (Pierremont) and Youree Drive, the center's site plan offers exceptional street visibility and better ingress and egress than most all of the newer centers in the market. Current tenants include Rite Aid, Sunshine Health Food, Learning Express, Meier's Interiors, Honey Baked Hams, Favorite Sisters Boutique & Time To Leave.



All information set forth in this brochure has been obtained from the Owner and its representatives, personal observation and/or sources, which are deemed reliable. Sealy & Company, LLC has no reason to doubt its accuracy, but does not guarantee it, nor are there any representations or warranties, expressed or implied, in this brochure. Information contained herein is subject to change or withdrawal without notice.



SEALY REAL ESTATE SERVICES, LLC  
 333 TEXAS ST., STE. 1050  
 SHREVEPORT, LA 71101  
 318.222.8700  
 WWW.SEALYNET.COM

FOR INFORMATION CONTACT:  
 BETH KING, SIOR  
 318.698.1103 (D)  
 318.453.6066 (M)  
 BETHK@SEALYNET.COM